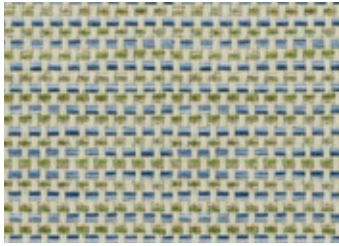


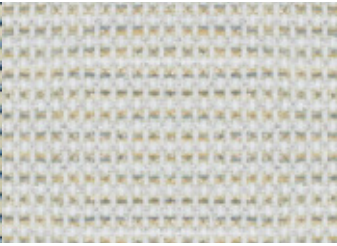
STRATUS

Teflon®

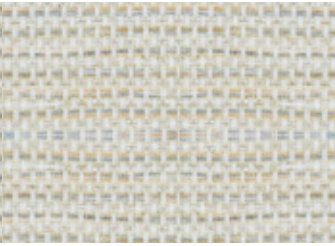
High Performance Woven Fabric for Wallcovering and Panel Systems



Casarina
39-26



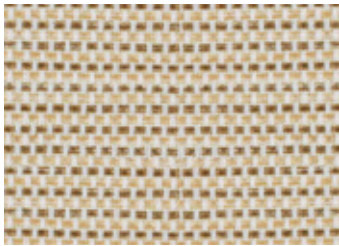
Mist
39-28



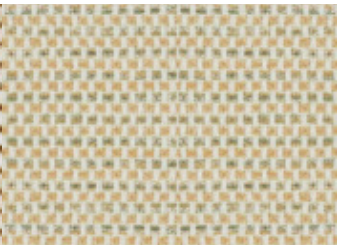
Ice
39-11



Parchment
39-24



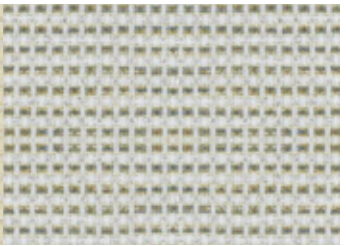
Terra
39-21



*Sand**
39-17



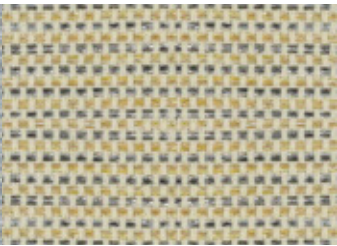
*Natural**
39-15



Starlight
39-29



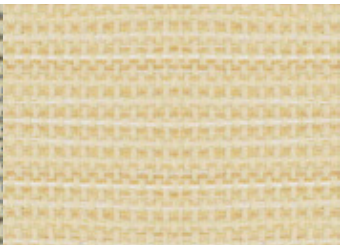
Bahamas
39-27



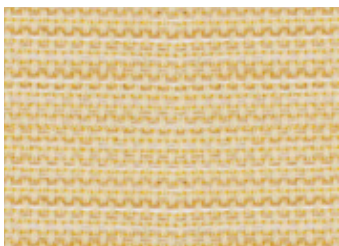
Olive Grove
39-25



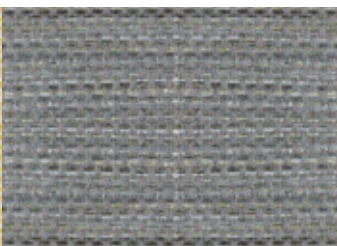
Glacier
39-09



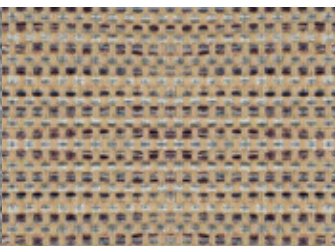
Corn silk
39-23



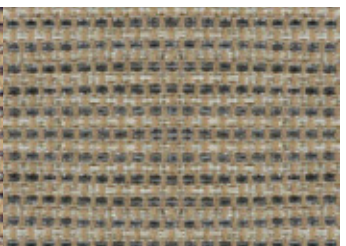
Buttercream
39-04



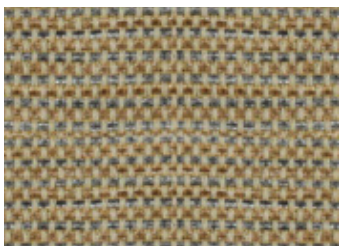
Silverado
39-30



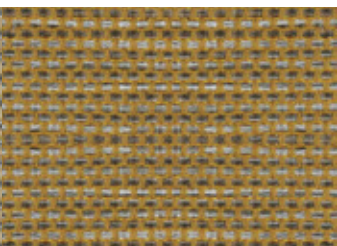
Currant
39-06



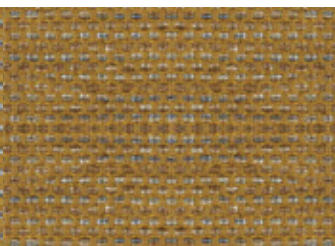
Graphite
39-10



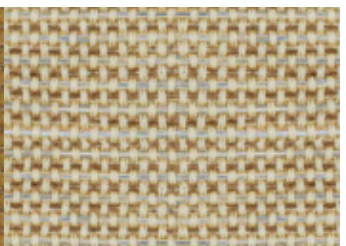
Truffle
39-22



*Iron Ore**
39-12



*Elm**
39-08



Agate
39-01

*Quick Ship Program

STRATUS

- **Roll Size:** 50 Yards • **Width:** 54" Plus Selvage
- **Composition:** Woven of Olefin/Polyester Yarns
- **Backing:** Acrylic/Latex with Mildew Inhibitor

Finish

Treated with Teflon® Fabric Protection System by DuPont. Teflon's soil and stain resistance adds years to the life of a fabric. It dramatically cuts on-site maintenance and replacement costs, making every installation a better investment for your customers.



Flammability

Tunnel Test:	Class A: 10-15 (Cement), 20-50 (Gypsum)
Corner Burn:	Passes
Vertical Burn:	Passes
Toxicity:	MEA #279-90M
Cigarette Ignition:	UFAC Class 1

Performance

Colorfast to light:	Class 5 (over 100 hours)
Colorfast to Crocking:	Class 5 (dry/wet procedure)
Moisture Regain:	0.05% (Excellent)
Tear Strength:	Warp-38.7 lbs., fill-19.8 lbs.
Tensile Strength:	Warp-190.3 lbs., fill-210.0 lbs.
Abrasion Resistance:	Exceeds 30,000 Wyzenbeek cycles (cotton duck)

Noise Reduction

Available unbacked or kiss-coated – 1 roll minimum

Anti-Microbial Properties

Stratus will not mildew, rot, or support the growth of bacteria and is non-allergenic.

Vapor Permeability

ASTM E-96, procedure B: 114.6 US perms

Maintenance

Fabric is easy to clean. Depending upon the extent of soilage, use traditional cleaning methods, i.e., washing, wiping, vacuuming. If promptly treated, most indelible stains can be removed by using selected cleaning agents with no damaging effects.

Installation

Be sure edges are even. Wall should be cleaned and primed before application. Apply a thin coating of heavy-duty vinyl adhesive to the wall – not the fabric. Allow adhesive to become tacky. Apply material to wall. Be sure edges butt evenly. Roll material firmly. More detailed wallcovering installation instructions are enclosed with every Stratus shipment and should be read carefully prior to installation.