

Finishes Fabric

*Hufcor
Colour Selection*

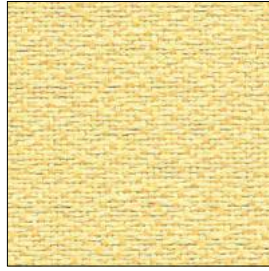


 **HUFCOR**[®]

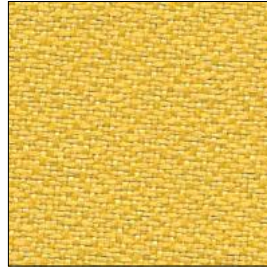
Hufcor Designer Series - Fabric



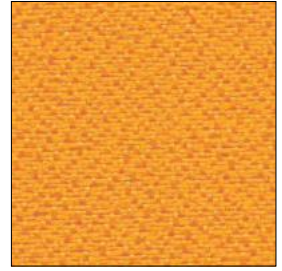
D15-433
Peach



D15-22
Citron



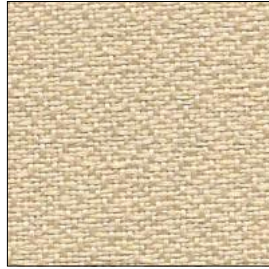
D15-19
Yellow



D15-25
Orange



D15-474
Cream



D15-09
Beige



D15-476
Sand



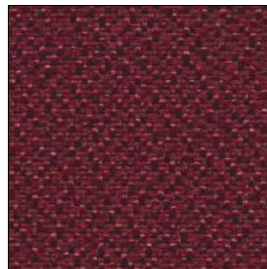
D15-29
Brown



D15-31
Peach



D15-918
Cherry



D15-11
Maroon



D15-919
Roselle



D15-04
Pink



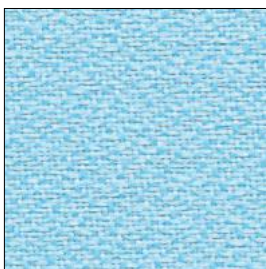
D15-18
L.Violet



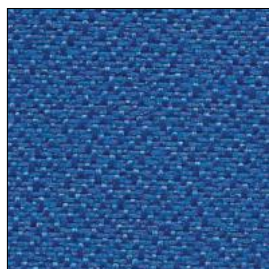
D15-988
Amethyst



D15-987
Purple



D15-12
Baby Blue



D15-10
Royal Blue



D15-28
Blue



D15-03
Dark Blue

Hufcor Designer Series - Fabric



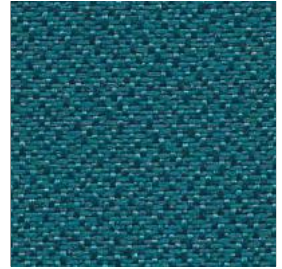
D15-793
Mercury



D15-863
Sea



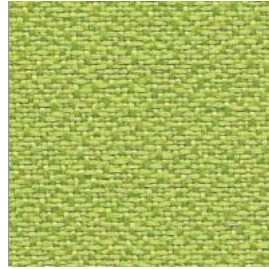
D15-15
Green



D15-17
Montsrat



D15-644
Lime



D15-05
Apple Green



D15-654
Forest



D15-657
Fern



D15-764
Pewter



D15-07
Grey



D15-13
Dark Grey



D15-21
Black

Specification

- » **Contents:** 100% Polyester
- » **Weight:** 380 grams (±) per linear meter
- » **Thickness:** 0.50 mm
- » **Finishing:** Acrylic back coating

Flammability

BS 5852: Part 1 Clause 4 – Pass
Smolder Resistance – California technical 117-2013 Section 1 compliance

Performance

Colour Fastness to Light – AATCC 16.3-2014 Opt. 3 – 4.5

Pilling Resistance – ASTM D4970 – Grade 4.5

Abrasion Resistance – ASTM D4966 > 50,000 rubs

Tensile Strength – ASTM D5035-11-2C-E
Wrap direction 421 lb
Filing direction 329 lb

Environment

VOC and PVC free, contain no heavy metals, formaldehyde or phthalates

Maintenance

Fabric is easy to clean. Regular dry clean applied. Spot cleaning with a damp cloth. Most indelible stains can be removed by using selected cleaning agents with no damaging effects.

» Concealed Trim Type

» Exposed Trim Type



